

Recent Trading Ideas

Sunday, March 6, 2016

Join our email list and get reports just like this send directly to you.

<http://www.leavittbrothers.com/email-subscribe.cfm>

It's been a heck of a couple weeks. The indexes have gone vertical, commodities have rallied with force, and trading, for the first time in a while, has been – dare I say – easy.

Here is a sample of our trade set-ups offered to our subscribers.



MOS Mosaic Co. NYSE

© StockCharts.com

4-Mar-2016

Open 28.55 High 29.82 Low 28.50 Close 29.61 Volume 9.1M Chg +1.12 (+3.93%) ▲

MOS (Daily) 29.61



GLOP GasLog Partners LP (unadjusted) NYSE

© StockCharts.com

4-Mar-2016

Open 16.78 High 16.95 Low 16.32 Close 16.70 Volume 150.2K Chg -0.16 (-0.95%) ▼

GLOP (Daily) 16.70



CY Cypress Semiconductor Nasdaq GS

© StockCharts.com

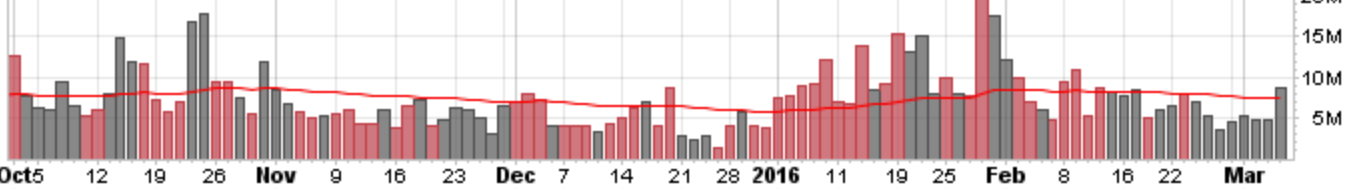
4-Mar-2016

Open 8.44 High 8.74 Low 8.34 Close 8.58 Volume 8.6M Chg +0.16 (+1.90%) ▲

▲ CY (Daily) 8.58



Volume 8.60M, EMA(60) 7.46M



ATW Atwood Oceanics NYSE

© StockCharts.com

4-Mar-2016

Open 9.04 High 10.79 Low 8.53 Close 9.84 Volume 10.1M Chg +0.93 (+10.44%) ▲

▲ ATW (Daily) 9.84



Volume 10.10M, EMA(60) 4.84M



ADI Analog Devices, Inc. (unadjusted) Nasdaq GS

© StockCharts.com

4-Mar-2016

Open 55.67 High 56.21 Low 55.11 Close 55.78 Volume 2.3M Chg +0.31 (+0.56%) ▲

ADI (Daily) 55.78

Semiconductor - Integrated Circuits

target 58.0

resistance 54.0



Volume 2.31M, EMA(60) 2.73M



AGI Alamos Gold Inc. NYSE

© StockCharts.com

4-Mar-2016

Open 5.33 High 5.64 Low 5.22 Close 5.23 Volume 3.5M Chg +0.10 (+1.95%) ▲

AGI (Daily) 5.23

Gold

resistance 4.50



Volume 3.50M, EMA(60) 1.56M



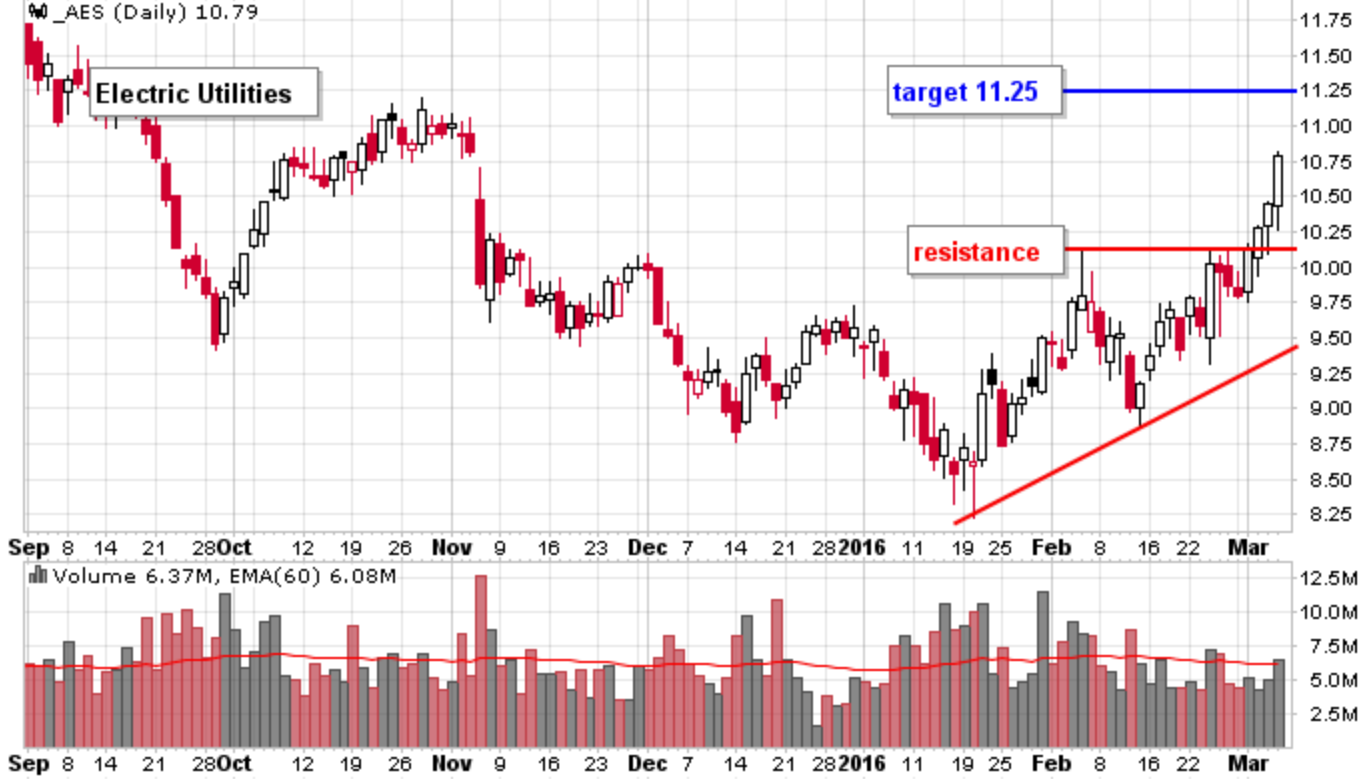
AES AES Corp. (unadjusted) NYSE

© StockCharts.com

4-Mar-2016

Open 10.43 High 10.82 Low 10.27 Close 10.79 Volume 6.4M Chg +0.34 (+3.25%) ▲

▲ AES (Daily) 10.79



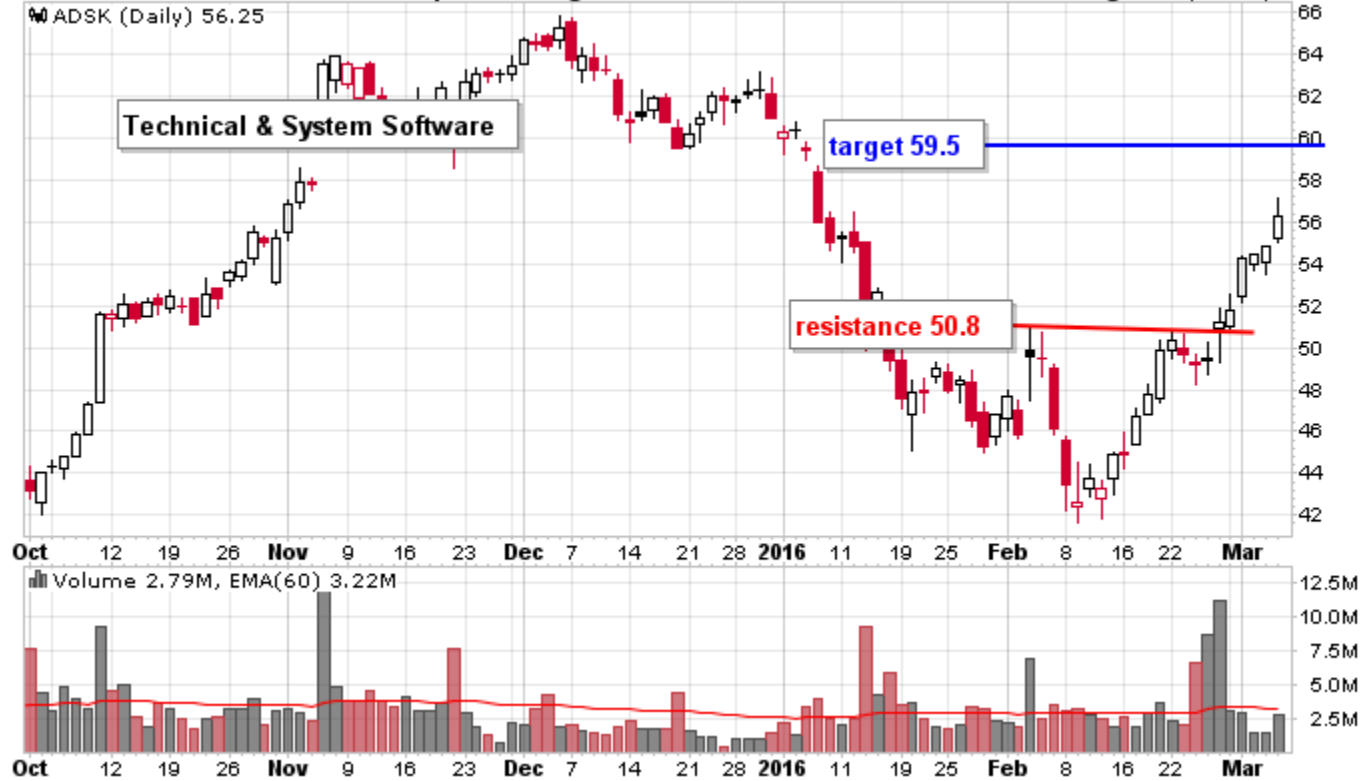
ADSK Autodesk, Inc. Nasdaq GS

© StockCharts.com

4-Mar-2016

Open 55.25 High 57.12 Low 55.02 Close 56.25 Volume 2.8M Chg +1.46 (+2.66%) ▲

▲ ADSK (Daily) 56.25

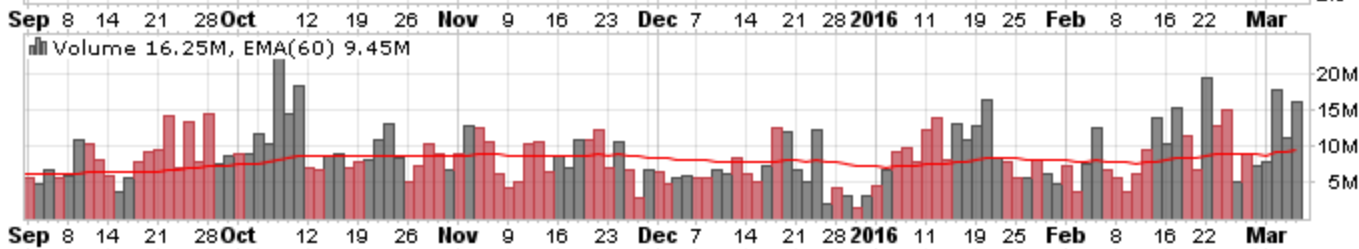


TCK Teck Resources Ltd. NYSE

4-Mar-2016

Open 7.53 High 8.21 Low 7.48 Close 7.71 Volume 16.2M Chg +0.42 (+5.76%) ▲

TCK (Daily) 7.71

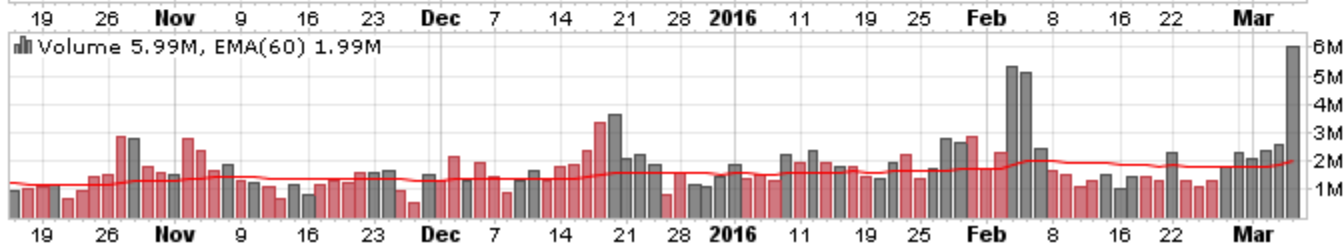


TDW Tidewater, Inc. NYSE

4-Mar-2016

Open 7.87 High 10.17 Low 7.84 Close 9.90 Volume 6.0M Chg +2.14 (+27.58%) ▲

TDW (Daily) 9.90



SXC SunCoke Energy Inc. NYSE

4-Mar-2016

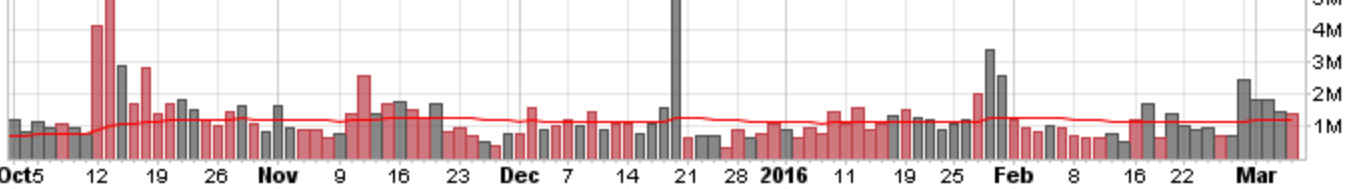
Open 5.98 High 6.15 Low 5.62 Close 5.67 Volume 1.4M Chg -0.23 (-3.90%)

© StockCharts.com

SXC (Daily) 5.67



Volume 1.43M, EMA(60) 1.23M



SWC Stillwater Mining Co. NYSE

4-Mar-2016

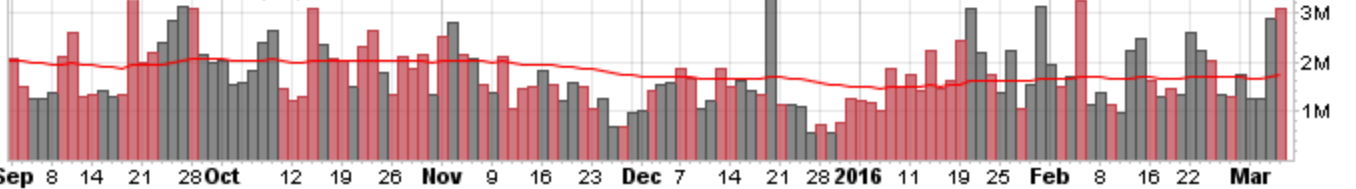
Open 9.81 High 10.26 Low 9.43 Close 9.64 Volume 3.1M Chg -0.08 (-0.82%)

© StockCharts.com

SWC (Daily) 9.64



Volume 3.09M, EMA(60) 1.75M



JOY Joy Global Inc. NYSE

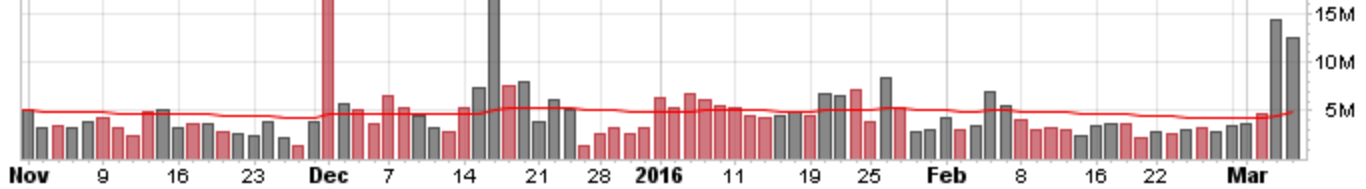
4-Mar-2016

Open 16.36 High 18.88 Low 16.13 Close 17.68 Volume 12.5M Chg +1.59 (+9.88%) ▲

JOY (Daily) 17.68



Volume 12.46M, EMA(60) 4.81M



HUN Huntsman Corp. NYSE

4-Mar-2016

Open 11.87 High 12.52 Low 11.79 Close 12.00 Volume 6.1M Chg +0.22 (+1.87%) ▲

HUN (Daily) 12.00



Volume 6.13M, EMA(60) 4.73M



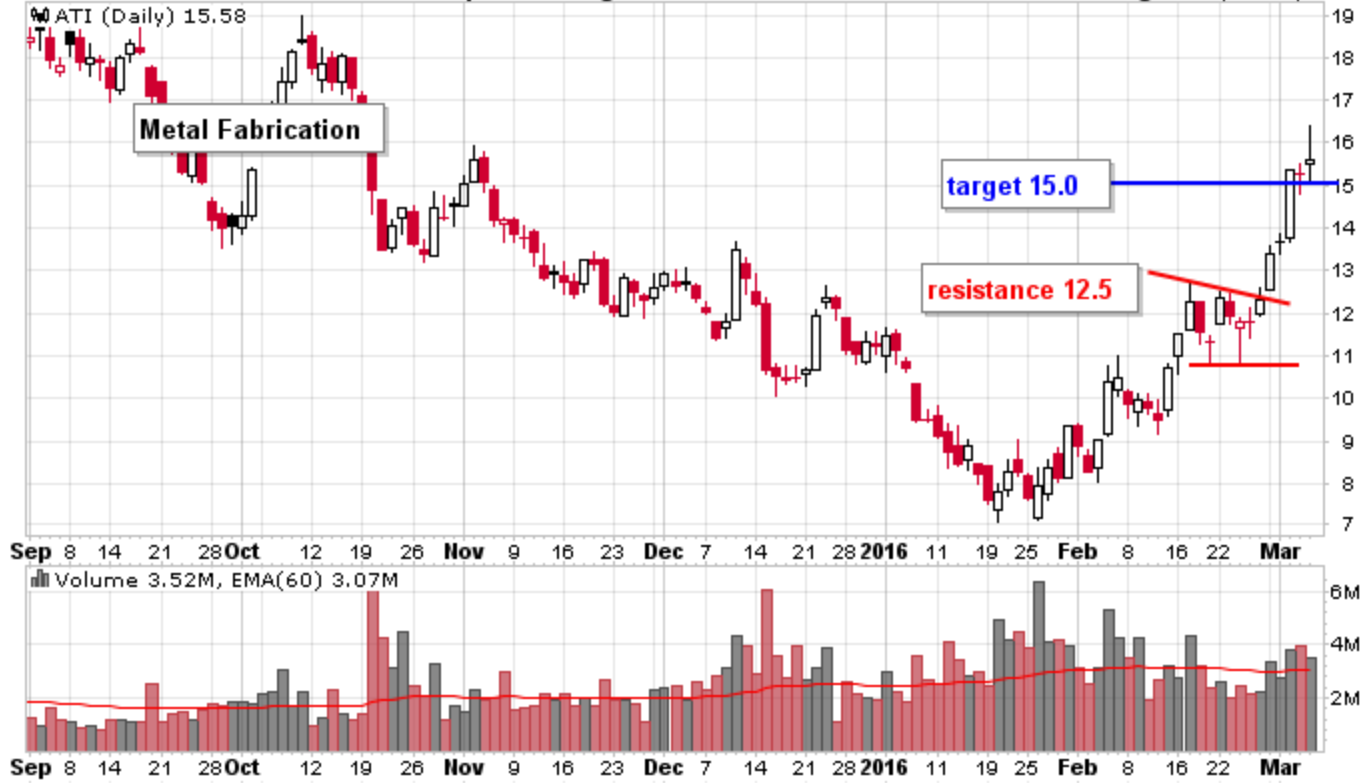
ATI Allegheny Technologies NYSE

© StockCharts.com

4-Mar-2016

Open 15.51 High 16.39 Low 15.03 Close 15.58 Volume 3.5M Chg +0.29 (+1.90%) ▲

ATI (Daily) 15.58



PIR Pier 1 Imports, Inc. NYSE

© StockCharts.com

4-Mar-2016

Open 5.48 High 5.63 Low 5.41 Close 5.48 Volume 1.7M Chg -0.01 (-0.18%) ▼

PIR (Daily) 5.48



Unfortunately heading into next week I don't see any good charts to play. They're either too far gone or just not very interesting. No biggie. Once the charts reset, we'll get another round of good charts to play.

Have a great week.

Jason Leavitt

Jason@leavittbrothers.com